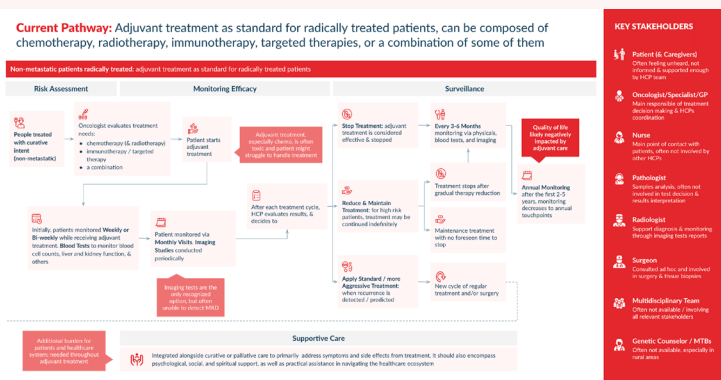


Current vs. Ideal Healthcare Pathway

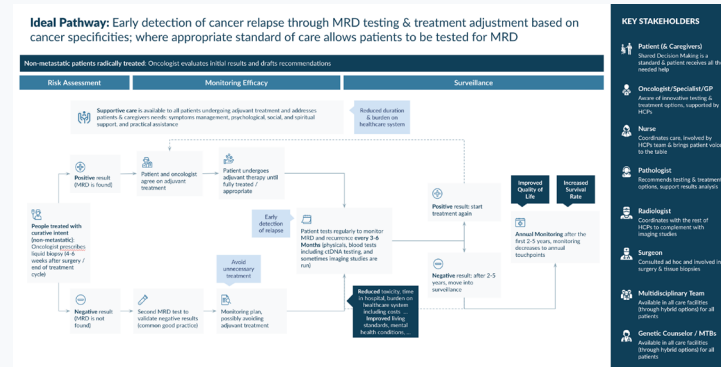
This document provides a generic overview of the current and ideal pathways for cancer care.

The current pathway offers a snapshot of the existing journey for cancer patients, while the ideal pathway, co-created with patients and healthcare providers, envisions an improved experience that prioritizes better patient outcomes through timely interventions & personalized treatment plans. The ideal pathway highlights the potential of ctDNA testing for Minimal Residual Disease detection and the key improvement points in cancer care.

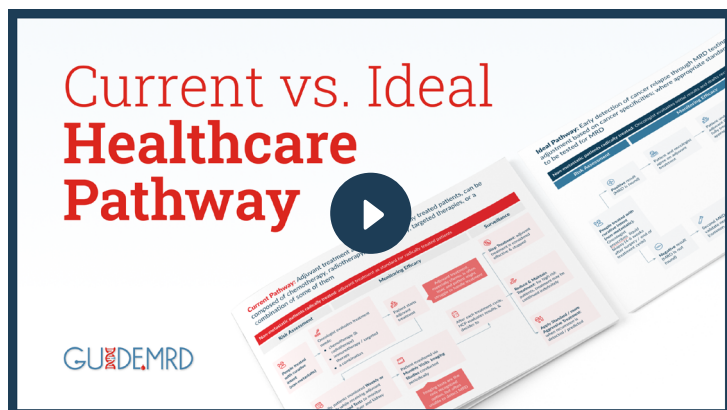
[Click here to navigate the Current cancer care pathway](#)



[Click here to navigate the Ideal pathway drafted in collaboration with patients and HCPs](#)



Watch this video
to learn more about the ideal healthcare pathway



Start the Survey Now!



bit.ly/GuideMRD-public-consultation